

WS-600

Multimedia

Fingerprint T&A terminal

Combination of Biometrics and Touch Keypad Technology



What is WS-600

WS-600 is the latest generation multimedia fingerprint Time and Attendance Terminal released by Waldso Inc. based on Inter inside and multimedia WEM510 platform—to be pioneer figure in biometrics field. As the first kind of the time and attendance in the world adopting 3 inch TFT. It enables the users to enjoy visual image. Whole graphical interface and facilitates navigation can enable users and devices to interact directly and friendly.

- * By the photo ID, users can upload self-defined background pictures.
- * Enjoy the pleasure from the touch keypad, it is helpful for the operation more easily
- * The optical sensor of WS-600 adopts new anti-seismic design which ensures fingerprint image be more clearer and effective.
- * Each WS-600 has the only legally authorized MAC address and it is suitable to be used in complicated internet environment
- * Self-service checking records, enormously convenient for users or administrator enquiry

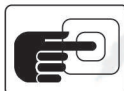
Product Features



TCP/IP network port, support network segment



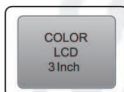
Support USB downloading



Touch keypad Technology--be up to 100,000 hours of working duration



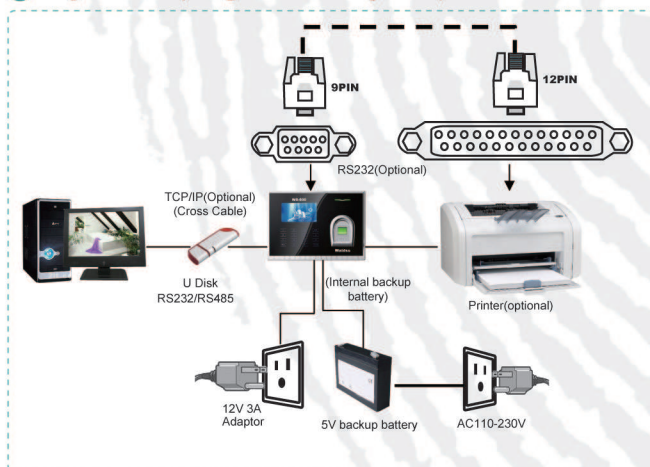
Reliable and stable Linux net transfer



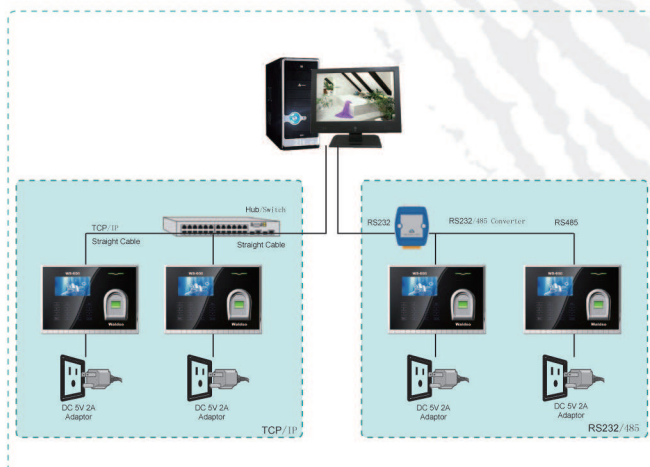
3 inch TFT, fully interface display

Layout Plan

Layout Plan(Single Reader System)



TCP/IP or RS485 Environment(Multi Reader System)



Specifications:

MODEL: WS-600

OPERATION

- * Sensor: Waldso Optical Sensor(Scratchproof)
- * Algorithm version: WaldsoFinger VX8.1
- * Hardware platform: WEM510
- * Operating system: Linux
- * Firmware Version: WaldsoFinger Version 2009-1
- * Operating Temperature: 0°C-45°C
- * Operating Humidity: 20%-80%

STORAGE

- * User Capacity: 2800 (OPTION:10000)
- * Transaction Storage: 100000

COMMUNICATION

- * RS232, RS485, TCP/IP, USB host (optional)

ENROLLMENT & VERIFICATION

- * Identification time <= 2S
- * FAR <= 0.0001%
- * FRR <= 0.01%

T&A MULTIMEDIA

- * LED: Red, Green
- * LCD: 3" TFT
- * Standard function: work code, SMS, Timing State Switch, Daylight Saving Time, photo ID
- * Optional function: simple access control, ID/Mifare/HID card, webserver, Printer, Soap, USB host, multi-national language, ADMS

CARD OPTIONAL

- * RFID: 64-bits, 125kHz
- * MIFARE: MFIS50/S70, 13.56MHz
- * HID: HID 1325, 26-bits, 125kHz
- * **ACCESS CONTROL:** Simple access control

POWER: 12V DC

DIMENSION: 27mm(L)x23mm(W)x9mm(H)

Application



Office



Hotel



Data Room



Apartment



Cashbox Management



Custom



villa



Bank