

BIOSTATION L2



Suprema BioStation L2 is an essential fingerprint terminal that provides comprehensive access control and time attendance features based on Suprema's next generation biometric technology and security platform. Designed for all type of time-attendance applications, BioStation L2 provides exceptional value by combining World's best Suprema fingerprint algorithm, high performance and enhanced security features.

BY ICT SMART

BIOSTATION L2 FINGERPRINT IP ACCESS TERMINAL

FINGERPRINT & CARD ACCESS CONTROL & TIME ATTENDANCE

BioStation L2

Features



Best-in-class Performance

- Latest Suprema algorithm
- 1.2GHz Quad-Core CPU
- Up to 150,000 matches per second (genuine)



Improved Accuracy & Security

- New advanced LFD(live finger detection) technique
- Improved OP5 optical sensor and algorithm



Expanded Capacity

- Max. 500k users/1 million text logs
- Large memory: 2GB Flash + 256 MB RAM



Full Time Attendance Features

- 2-inch color LCD with intuitive GUI
- Full time and attendance functionality
- 3 x 4 numeric touch keypad

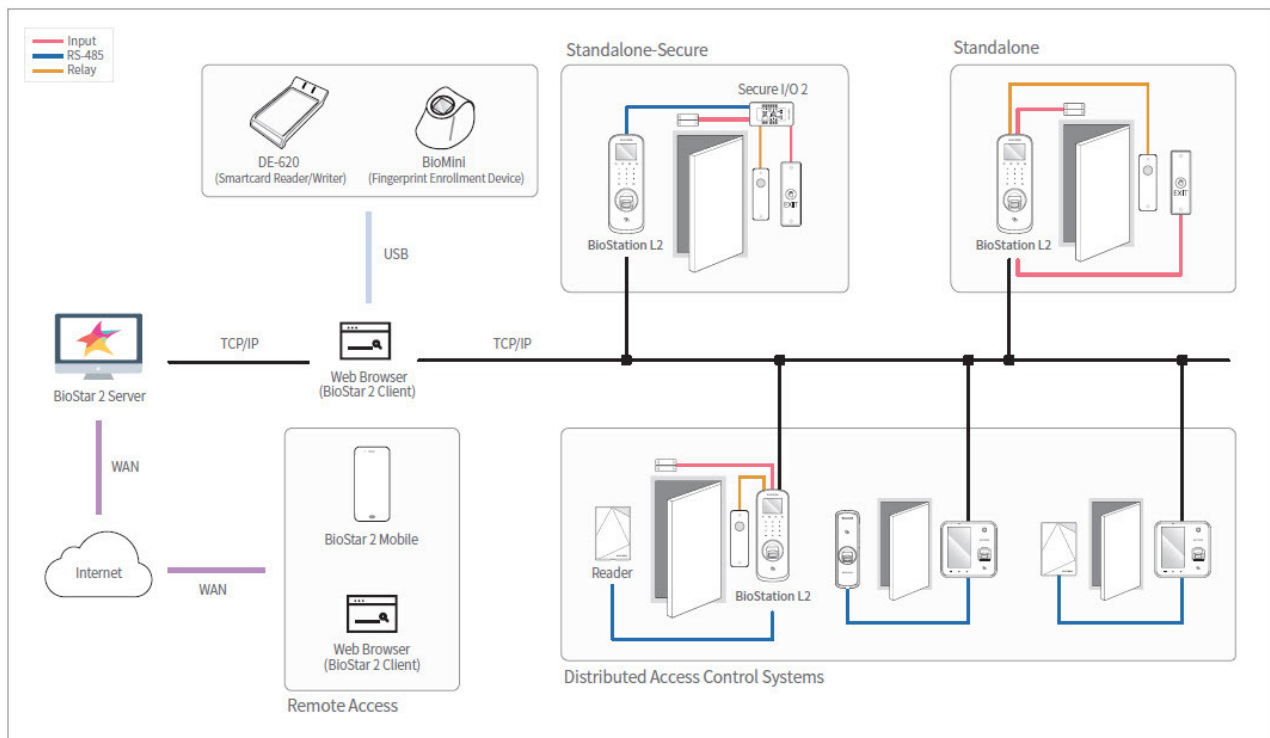


Versatile Interfaces / RF options

- Wiegand, RS485, TTL I/O, relay
- 125KHz EM
- 13.56 MHz Mifare / DESFire / DESFire EV1 / FeliCa / NFC

Specifications

Biometric	Fingerprint
Template	SUPREMA/ISO 19794-2/ANSI 378
Extractor / Matcher	MINEX certified and compliant
LFD	Supported
RF Option	125 KHz EM 13.56 MHz Mifare / DESFire / DESFire EV1 / FeliCa / NFC
CPU	1.2 GHz Quad-Core
Memory	2GB Flash + 256 MB RAM
Max. User	500,000 (1:1), 100,000(1:N)
Max. Template	1,000,000(1:1), 200,000(1:N)
Max. Logs	1,000,000(text)
LCD	2-inch color LCD
Sound	16-bit Hi-Fi
Ethernet	10/100 Mbps, auto MDI / MDI-X
RS-485	1ch host or slave (selectable)
Wiegand	1ch input or output (selectable)
TTL	2ch input
Relay	1 Relay
Tamper	Supported
Power	DC 12V
Operating Temperature	-20°C ~ 50°C (-4°F~ 122°F)
Operating Humidity	0% ~ 80%, non-condensing
Dimensions (WxHxD, mm)	71 x 201 x 44 (bottom)/34 mm(top) (2.80" x 7.91" x 1.7"(bottom)/1.34"(top)
Unit Weight	Device: 280g (0.62lb) Bracket: 61g (0.13lb) including washers/bolts
Certificates	CE, FCC, KC, RoHS, REACH, WEEE



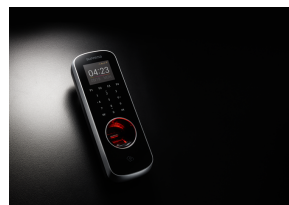
Related Products



Secure I/O 2



BioMini



ICT Smart Co., Ltd. 22/41 The Exclusive Townhome Suanluang, Chaloemprakit Ratchakan Thi 9 Soi 72 Rd., Pravat, Pravat, Bangkok 10250 Tel 02 726-7771-2 | Fax 02 328-8206 | Email sales@ictsmart.com | www.ictsmart.com | Line ID: ictsmart



PREMIUM
SUPPORT



ICT smart